

# Editing Tips



## EXPOSURE

DEPENDING ON WHAT TYPE OF LIGHTING YOU SHOT YOUR PHOTO IN, YOU SHOULD PLAY AROUND WITH THE EXPOSURE AND CONTRAST TO ADD THE RIGHT ABOUT BRIGHTNESS TO YOUR PHOTOS.

## COLORS

EACH OF THESE FILTERS PLAY WITH COLORS IN A UNIQUE, BUT SIMILAR WAY. ADJUST THE LUMINANCE AND SATURATION OF THE COLORS TO GET THE TONES YOUR LOOKING FOR. I RECOMMEND PLAYING WITH THE ORANGES, GREENS, AND BLUES.



## LENS CORRECTIONS

MANY LENS CAN CAUSE DISTORTION TO YOUR PHOTOS. CHECK THE “ENABLE PROFILE CORRECTIONS” BOX UNDER THE LENS CORRECTION SECTION TO REMOVE ANY LENS DISTORTION.

ABOUT THE

# Wander Presets

**THE WANDER PRESET BACK INCLUDES FIVE INDIVIDUAL  
PRESETS CREATED FOR LIGHTROOM CC. EACH INSPIRED  
BY PLACES I HAVE VISITED.**

TAG #WANDERPRESETS  
SO I CAN SHARE THE ART YOU  
CREATE.

THESE PRESETS WORK BEST FOR  
.JPG AND RAW PHOTOS SHOT IN  
OUTDOOR LIGHTING OR DIRECT  
SUNLIGHT.

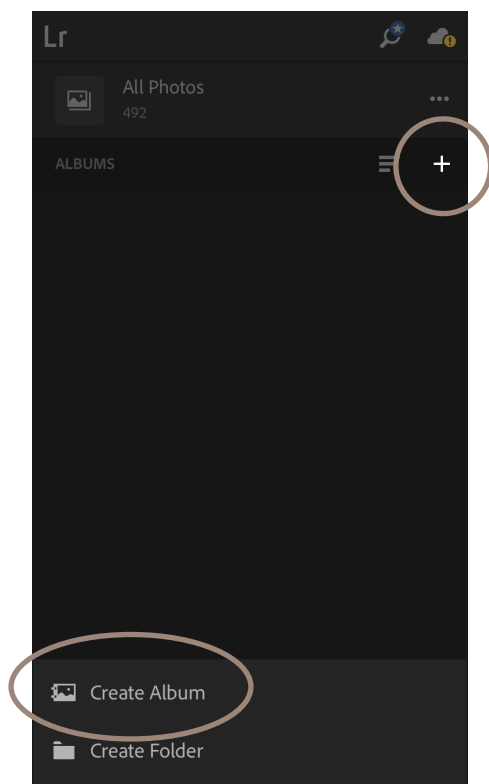
THIS PACK INCLUDES PRESETS  
FOR THE LIGHTROOM CC  
DESKTOP AND PHONE  
APPLICATIONS.

DESKTOP PRESETS ARE BEST  
USED ON RAW PHOTOS..

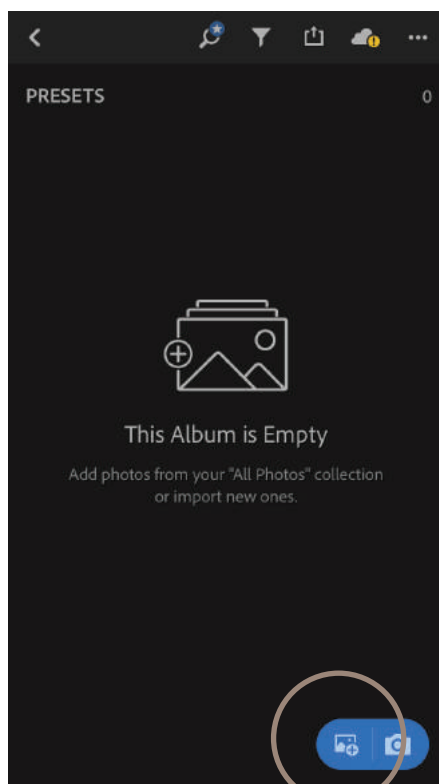
PLEASE NOTE, THESE ARE NOT  
FILTERS. PRESETS WORK  
DIFFERENTLY ON EVERY  
PHOTO DEPENDING ON LIGHTING,  
COLORS, ETC. YOU WILL LIKELY  
NEED TO TWEAK THE PRESETS  
A BIT.







AFTER DOWNLOADING  
LIGHTROOM CC  
CREATE A NEW ALBUM

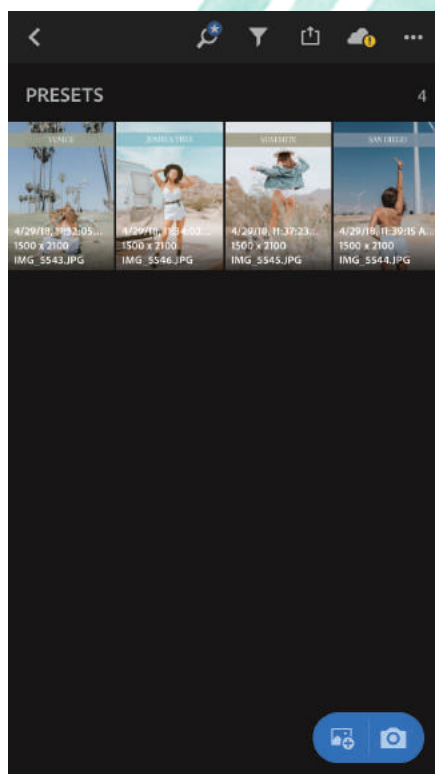


CLICK THE BLUE ICON  
ON THE BOTTOM RIGHT  
TO ADD THE PRESET FILE



SELECT THE FOUR DNG  
PRESET FILES.  
(THESE FILES WILL APPEAR BLANK)

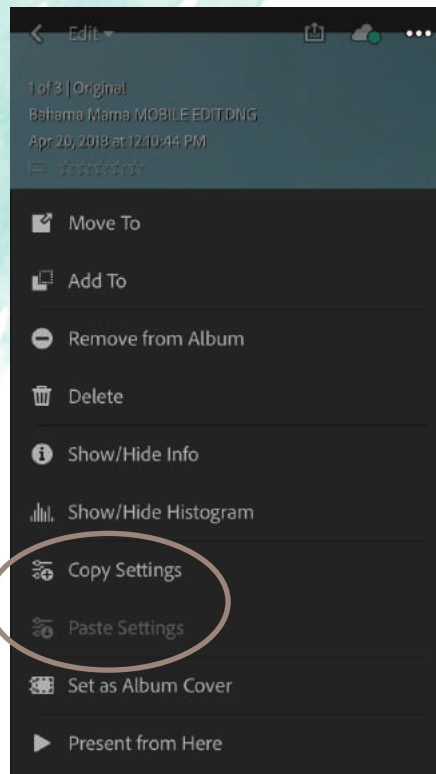
*Step by Step*



THE FOUR PRESET  
FILES SHOULD APPEAR ON  
YOUR APP



SELECT THE PRESET YOU  
WOULD LIKE TO USE.  
*THE PRESET TITLE CAN BE FOUND BY  
SELECTING "SHOW/HIDE INFO"*



COPY SETTINGS FROM  
PRESET PHOTO AND  
PASTE ON YOUR PHOTO



# Mobile Install Steps

- 1/ DOWNLOAD PURCHASED FILE ONTO YOUR PHONE  
(FILE WILL APPEAR BLANK/WHITE ON YOUR PHONE)
- 2/ DOWNLOAD LIGHTROOM CC APP ONTO YOUR PHONE
- 3/ IN THE LIGHTROOM CC APP CREATE AN ALBUM  
TITLED PRESETS
- 4/ UPLOAD THE THREE PRESET FILES TO THE PRESET  
ALBUM
- 5/ TO UTILIZE PRESET COPY THE PRESET SETTINGS AND  
PASTE ONTO YOUR OWN PHOTO

#WANDERPRESETS

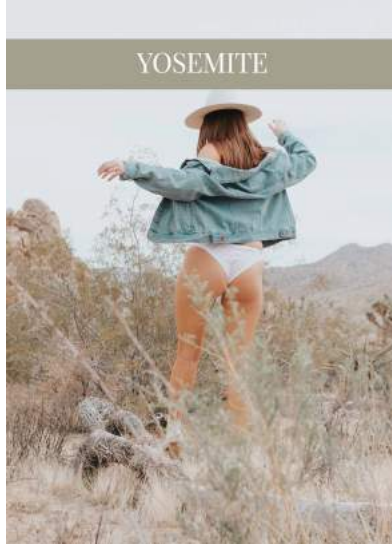
BW  
SIW

BUT WHAT  
**SHOULD I WEAR**  
A LIFE & STYLE BLOG

JOSHUA TREE



YOSEMITE



SAN DIEGO



VENICE



## Desktop Install Steps

- 1/ OPEN LIGHTROOM.
- 2/ GO TO: LIGHTROOM • PREFERENCES • PRESETS.
- 3/ CLICK ON THE BOX TITLED: SHOW LIGHTROOM PRESETS FOLDER.
- 4/ DOUBLE CLICK ON LIGHTROOM.
- 5/ DOUBLE CLICK ON DEVELOP PRESETS.
- 6/ COPY THE PRESETS FILES INTO DEVELOP PRESETS FOLDER.
- 7/ RESTART LIGHTROOM.

#WANDERPRESETS

BW  
SIW