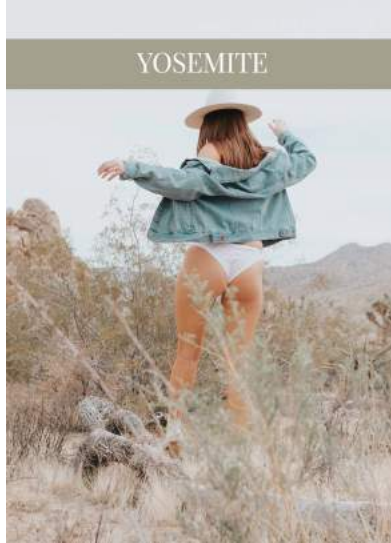


BUT WHAT
SHOULD I WEAR
A LIFE & STYLE BLOG

JOSHUA TREE



YOSEMITE



SAN DIEGO



VENICE



Install Steps

- DOWNLOAD PURCHASED FILE ONTO YOUR PHONE
(FILE WILL APPEAR BLANK/WHITE ON YOUR PHONE)
- DOWNLOAD LIGHTROOM CC APP ONTO YOUR PHONE
- IN THE LIGHTROOM CC APP CREATE AN ALBUM
TITLED PRESETS
- UPLOAD THE THREE PRESET FILES TO THE PRESET
ALBUM
- TO UTILIZE PRESET COPY THE PRESET SETTINGS AND
PASTE ONTO YOUR OWN PHOTO

#WANDERPRESETS

ABOUT THE

Wander Presets

THE WANDER PRESET BACK INCLUDES FIVE INDIVIDUAL PRESETS CREATED FOR LIGHTROOM CC. EACH INSPIRED BY PLACES I HAVE VISITED.

TAG #WANDERPRESETS
SO I CAN SHARE THE ART YOU
CREATE.

THESE PRESETS WORK BEST FOR
.JPG PHOTOS SHOT IN OUTDOOR
LIGHTING OR DIRECT SUNLIGHT.

EDIT PHOTOS IN THE LIGHTROOM
ON YOUR PHONE.

PRESETS ARE BEST USED ON
.JPG IMAGES.

PLEASE NOTE, THESE ARE NOT
FILTERS. PRESETS WORK
DIFFERENTLY ON EVERY
PHOTO DEPENDING ON LIGHTING,
COLORS, ETC. YOU WILL LIKELY
NEED TO TWEAK THE PRESETS
A BIT.



Editing Tips



EXPOSURE

DEPENDING ON WHAT TYPE OF LIGHTING YOU SHOT YOUR PHOTO IN, YOU SHOULD PLAY AROUND WITH THE EXPSOURE AND CONTRAST TO ADD THE RIGHT ABOUT BRIGHTNESS TO YOUR PHOTOS.

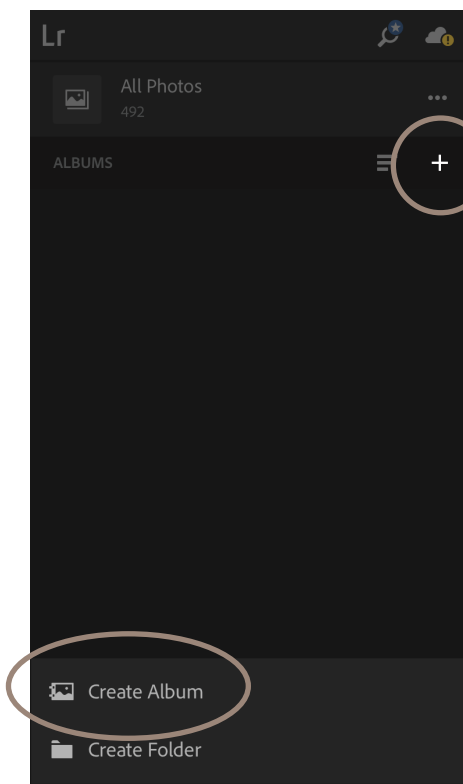
COLORS

EACH OF THESE FILTERS PLAY WITH COLORS IN A UNIQUE, BUT SIMILAR WAY. ADJUST THE LUMINANCE AND SATURATION OF THE COLORS TO GET THE TONES YOUR LOOKING FOR. I RECOMMEND PLAYING WITH THE ORANGES, GREENS, AND BLUES.

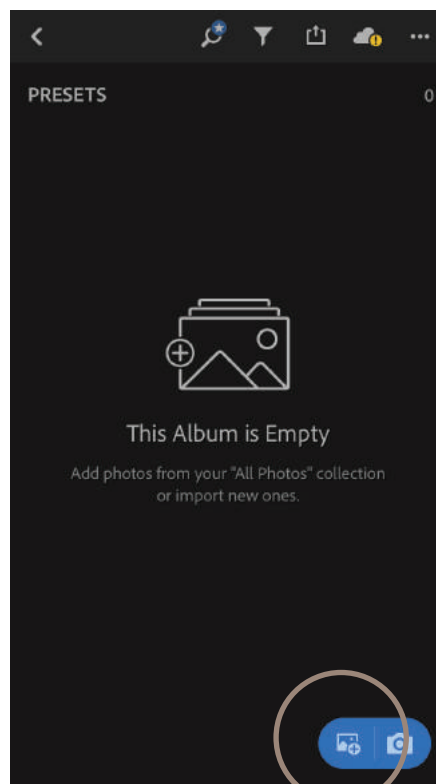


LENS CORRECTIONS

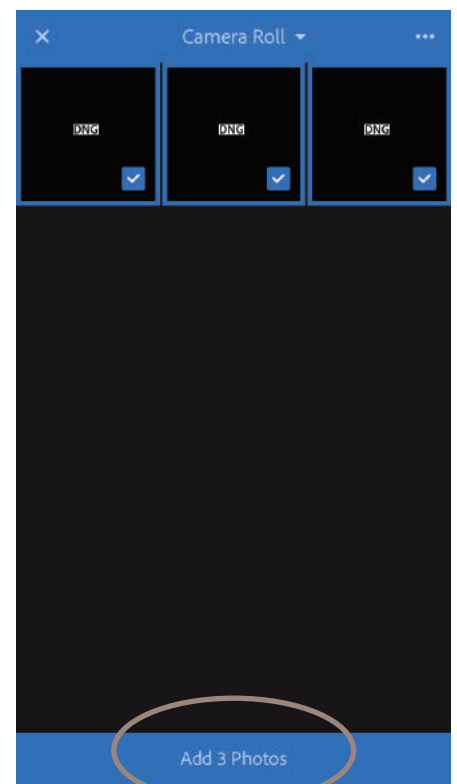
MANY LENS CAN CAUSE DISTORATION TO YOUR PHOTOS. CHECK THE “ENABLE PROFILE CORRECTIONS” BOX UNDER THE LENS CORRECTION SECTION TO REMOVE ANY LENS DISTORTION.



AFTER DOWNLOADING
LIGHTROOM CC
CREATE A NEW ALBUM



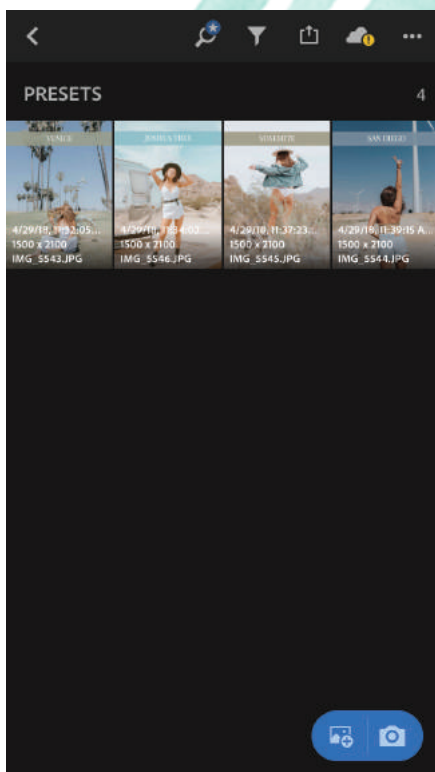
CLICK THE BLUE ICON
ON THE BOTTOM RIGHT
TO ADD THE PRESET FILE



SELECT THE FOUR DNG
PRESET FILES.

(THESE FILES WILL APPEAR BLANK)

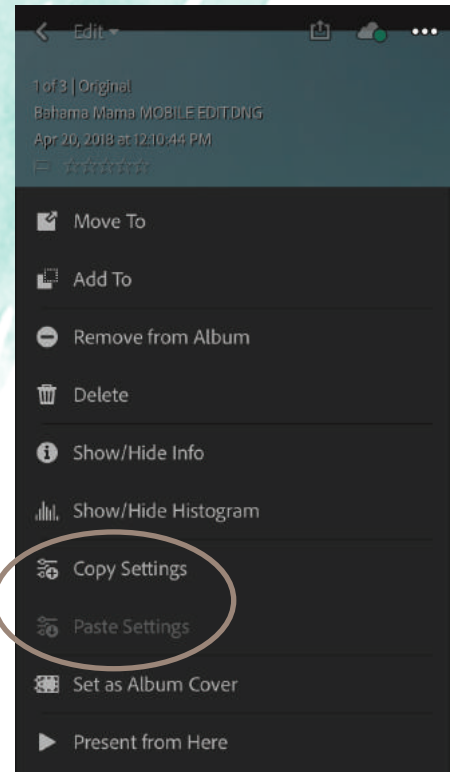
Step by Step



THE FOUR PRESET
FILES SHOULD APPEAR ON
YOUR APP



SELECT THE PRESET YOU
WOULD LIKE TO USE.
*THE PRESET TITLE CAN BE FOUND BY
SELECTING "SHOW/HIDE INFO"*



COPY SETTINGS FROM
PRESET PHOTO AND
PASTE ON YOUR PHOTO